

# Baillieston Community Hub

Swinton Community Council  
11<sup>th</sup> November 2025

# INTRODUCTION

## Project Journey

- Timeline
- Community Feedback

## Hub Overview

- Ground Floor – Library & Community Spaces
- First Floor – Glasgow Club

## Park Overview

- Edinburgh / Glasgow Rd
- Civic Realm
- Wider Park

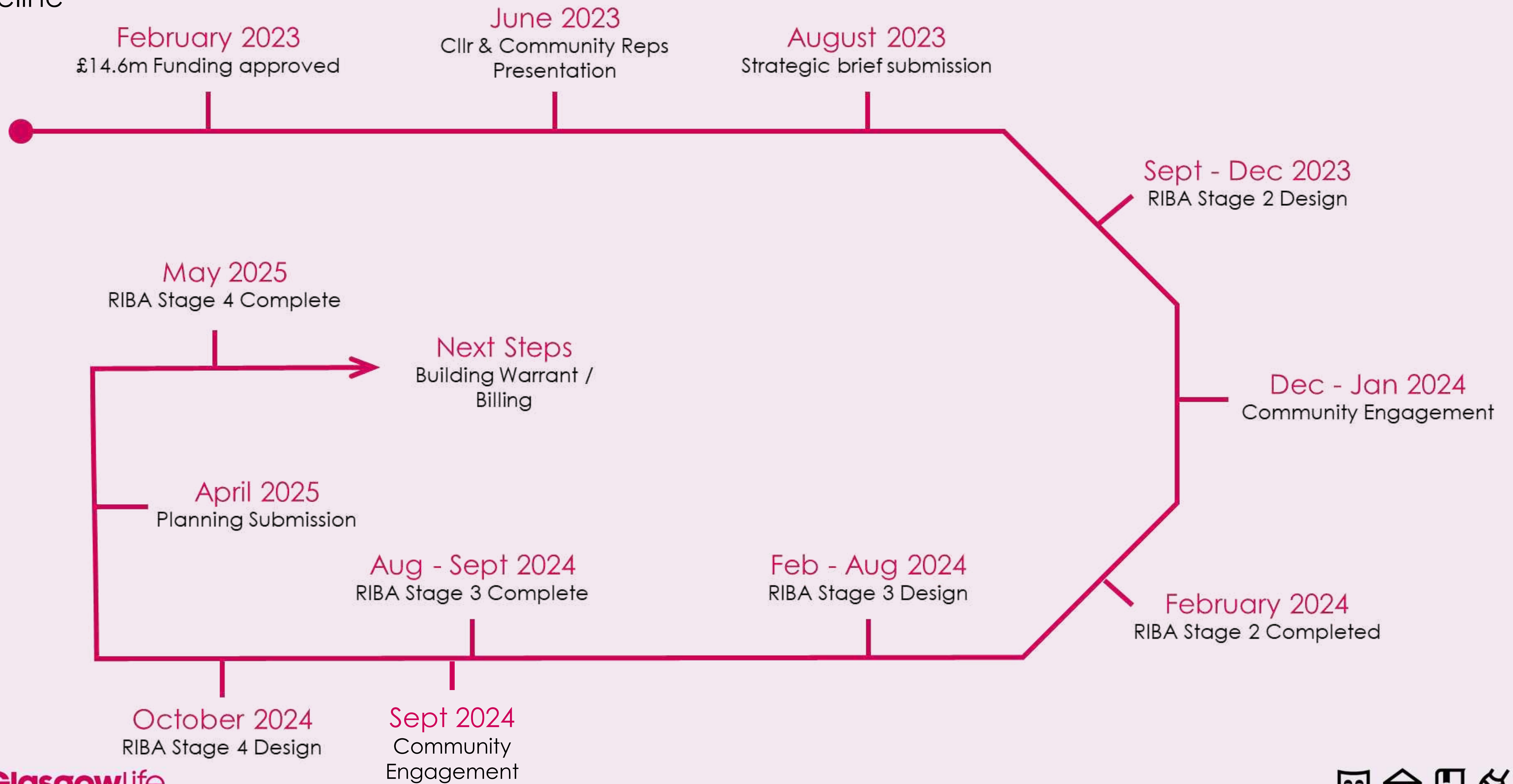
## Lookahead

- Projected Timeline & Milestones



# PROJECT JOURNEY

## Timeline



# PROJECT JOURNEY

## Community Feedback

Would be better to have a swimming pool in Baillieston.

Badminton Space - include a sports hall or

Multi-Use Games Court consideration to allow all size netballing run-

There is significant concern of the transport impact on the surrounding Bredisholm Rd & Ravenswood Rd from unauthorised pavement mounting/parking of drivers attending the facility and

Swap gym & library about, crazy having a gym up from a library. Café required.

A 20 exist dem woul gree publ fact the reve

OFFICIAL	
Glasgow Life Response	
Topic	Public Comment
Transport Impacts	I live in the Lowlands estate which has over 300 houses and the entrance road at the old houses on Bredisholm Road needs widened and traffic lights need installed between Bredisholm Road and Morrisons as it is a bottleneck just now and will only get worse when the hub opens.
	The planning application for the new Hub will be accompanied by a Design and Access Statement which includes an assessment of the capacity of the existing road network to accommodate additional traffic demand associated with attendance at the Hub. There is no indication to date that the construction of the community hub in James Lindsay Park will need to be accompanied by amendments to the width of roads to the south and west of the park, but residents will have the opportunity to make representation on this matter as part of the forthcoming planning application.
	In general, I am not happy with the community hub being built in one of the last green spaces in Baillieston. I am not at all happy with the parking location as people just won't go all the way down Edinburgh Rd, round the roundabout and the way down Ellismuir Rd, Bredisholm Rd and this back. They will park in Ellismuir Rd, Bredisholm Rd and this way system, it already happens because of the Braveheart gym, causes chaos at the junction of Ravenswood and Bredisholm. Parking should be built alongside the park on Ravenswood Rd.
	It is proposed that the loss of greenspace to accommodate the footprint of the new Hub development will be replaced by the adoption and re-designation (as a park) of the vacant land to the east of the north-south tree line.
	The proposed vehicular entrance for the new Hub facility has been identified during consultation with Transport Scotland and the City Council's transport planning team. This takes account of the existing road layout and current highway design regulations. There will be off-street parking for cars, motor bikes, bicycles etc in accordance with the requirements set out in the City Development Plan, the scale and appropriateness of which will be assessed as part of the forthcoming planning application. Unauthorised parking in neighbouring streets will be subject to existing traffic regulations and enforcement measures.
	The proposed vehicular entrance for the new Hub facility has been identified during consultation with Transport Scotland and the City Council's transport planning team. This takes account of the existing road layout and current highway design regulations.
	The proposed Community Hub will include provision of off-street parking for cars, motor bikes, bicycles etc in accordance with the requirements set out in the City Development Plan. The scale and appropriateness of this provision will be assessed as part of the forthcoming planning application.
	Based on consultation with Transport Scotland and the City Council's Transport Planning Team there is no indication date that the construction of the community hub in James Lindsay Park will need to be accompanied by amendments to the surrounding road layout. Any residents concerned about existing levels of traffic congestion on the roads surrounding the park and its impact on public safety and/or amenity, should contact their local councillor(s) who will be able to highlight these concerns with relevant officials.

OFFICIAL

gam mal netball ill be e star ing, i ns. W comp ically

OFFICIAL

### BAILLIESTON COMMUNITY HUB – PUBLIC ENGAGEMENT (September 2024)

#### SUMMARY REPORT

##### Introduction

Baillieston is a suburban area with a mix of demographics, including young families, working-age individuals, and older adults. It has historically faced challenges with limited local amenities, leading many residents to travel to neighbouring areas for services.

The proposed new Community Hub in Baillieston is one of the largest infrastructure projects to impact on the east of the city in recent years and highlights the city's ongoing commitment to the health and well-being of its citizens. It will ensure that the expansion in residential development within the Broomhouse, Baillieston and Carmyle Community Growth Area (CGA) is complemented by investment in modern, accessible facilities that will encourage residents and visitors alike to experience life-affirming activities in a family-friendly environment.

Located within an enhanced James Lindsay Park, the new build Hub will contain a new library (relocated from Main Street, Baillieston), gym, dance studios and community spaces. The aim of the Hub is for it to become a focal point where people can meet, participate, learn, relax, all made possible by the construction of light and airy, modern facilities, and the delivery of a programme of cultural, educational, health and well-being activities throughout the year. The development of the Hub aligns with Glasgow City Council's Strategic Plan 2022-27, particularly the priorities of promoting wellbeing, reducing inequality, and building stronger communities.

##### Overview on Progress

In February 2023 the City Council approved the allocation of £14.68 million in support of the delivery of the new Community Hub, with an additional £1 million available to support investment priorities identified within the CGA. Since that time, Glasgow Life has adopted the lead role in managing design development of the project, including public communications. By August 2023 Glasgow Life had finalised and issued a revised strategic design brief which aligned with the approved capital budget announced in February 2023.

Design proposals at RIBA Stage 2 were the subject of a public consultation exercise during December 2023 and January 2024. Subsequent design development, culminating in the current RIBA Stage 3 design proposal has been the subject of the most recent public engagement exercise conducted in September 2024.

OFFICIAL

ensures uch as s play, e located for easy dren, ose with s.



# HUB OVERVIEW

## Ground Floor – Library & Community Spaces

### Community spaces

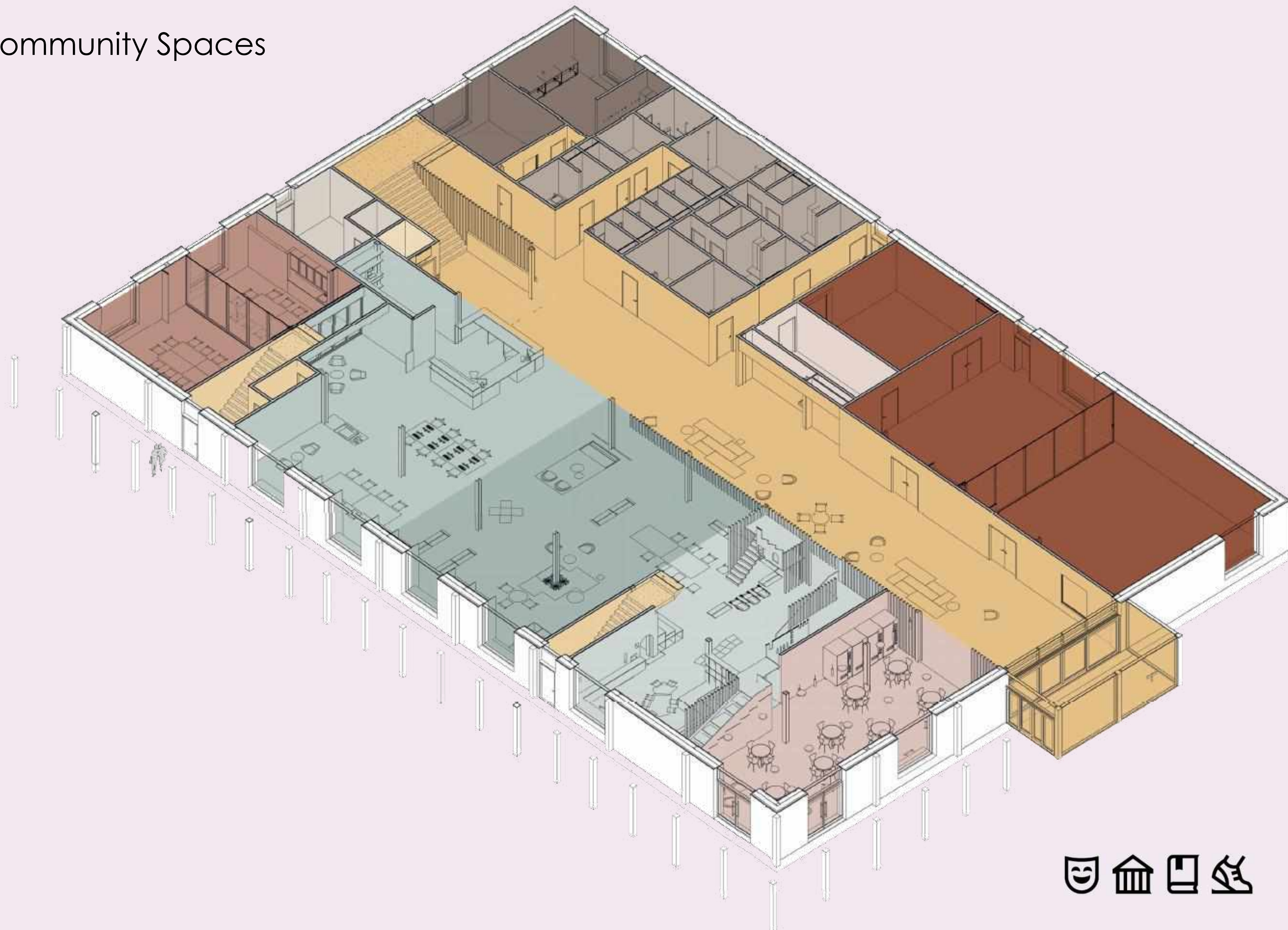
- Multi-purpose hall
- Flexible seating area
- Community room
- Community kitchen

### Library

- Adult
- Youth
- Children

### Circulation

- General
- Fire escape
- Lift
- Staff
- Toilet & Changing























# HUB OVERVIEW

## First Floor – Glasgow Club

### Studios

Group fitness & store

Spin Studio

Holistic Studio

### Gym

General

Live active & health  
co-ordination rooms

### Circulation

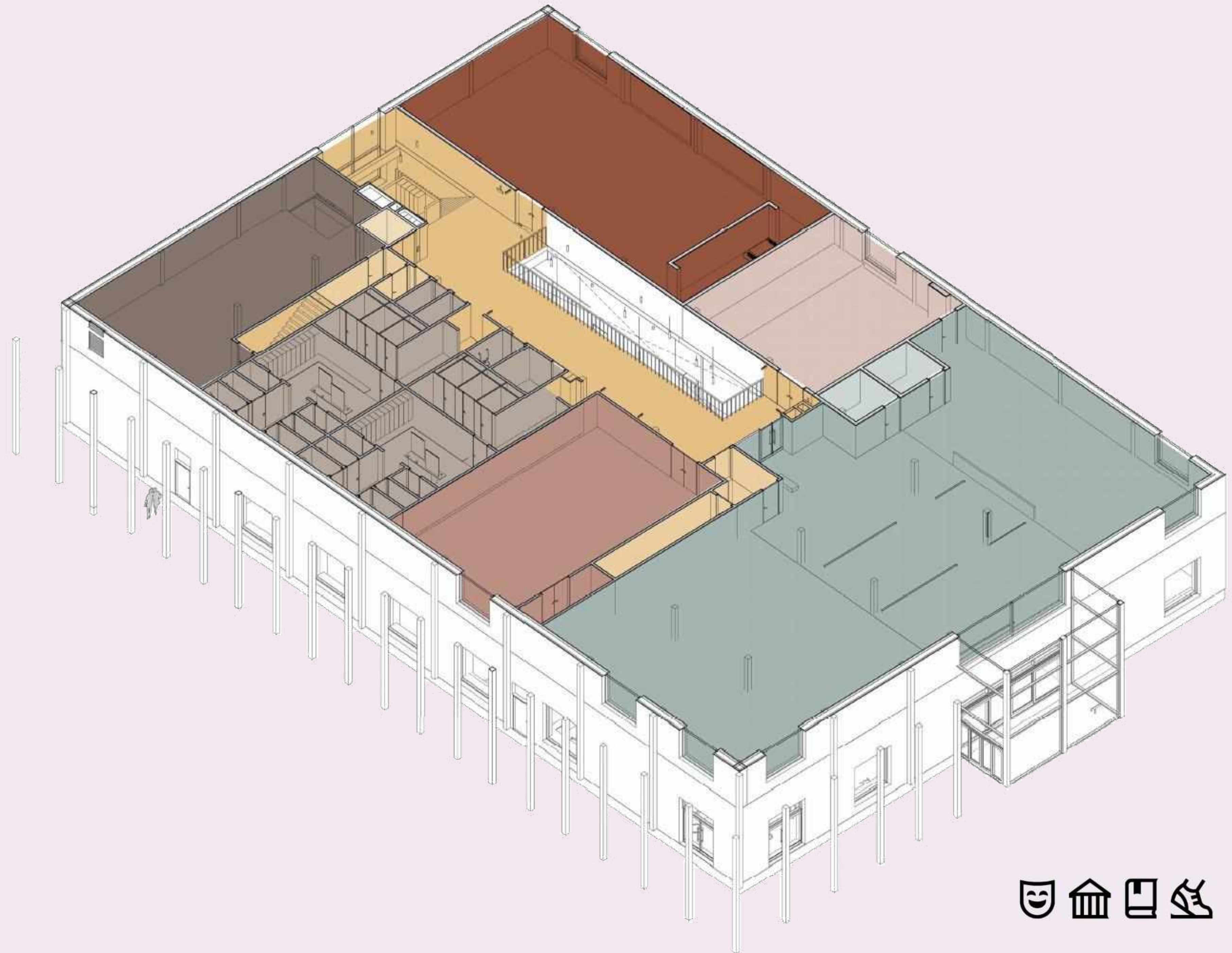
General

Fire escape

Lift

Plant

Toilet & Changing







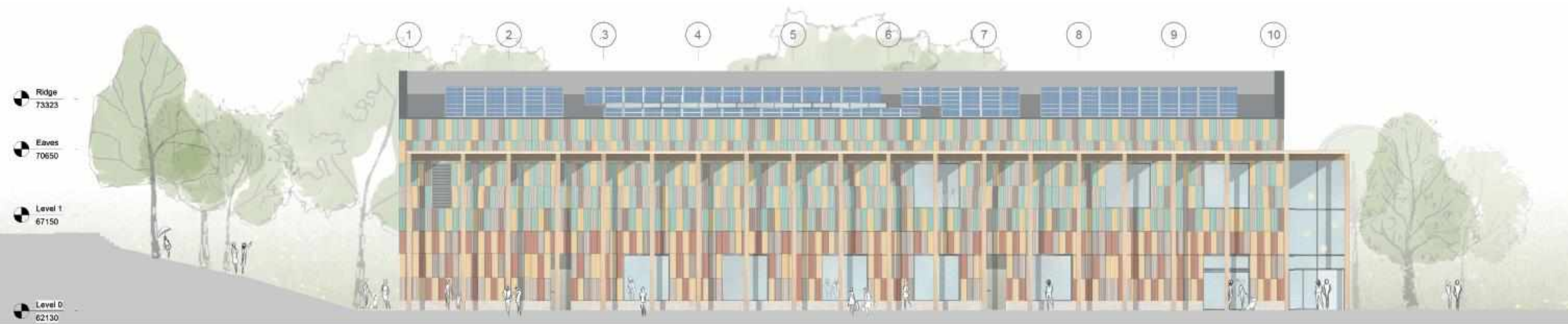












**South Elevation** – Bredisholm Road



**East Elevation** – Inside Park



**West Elevation** – Ravenswood Road



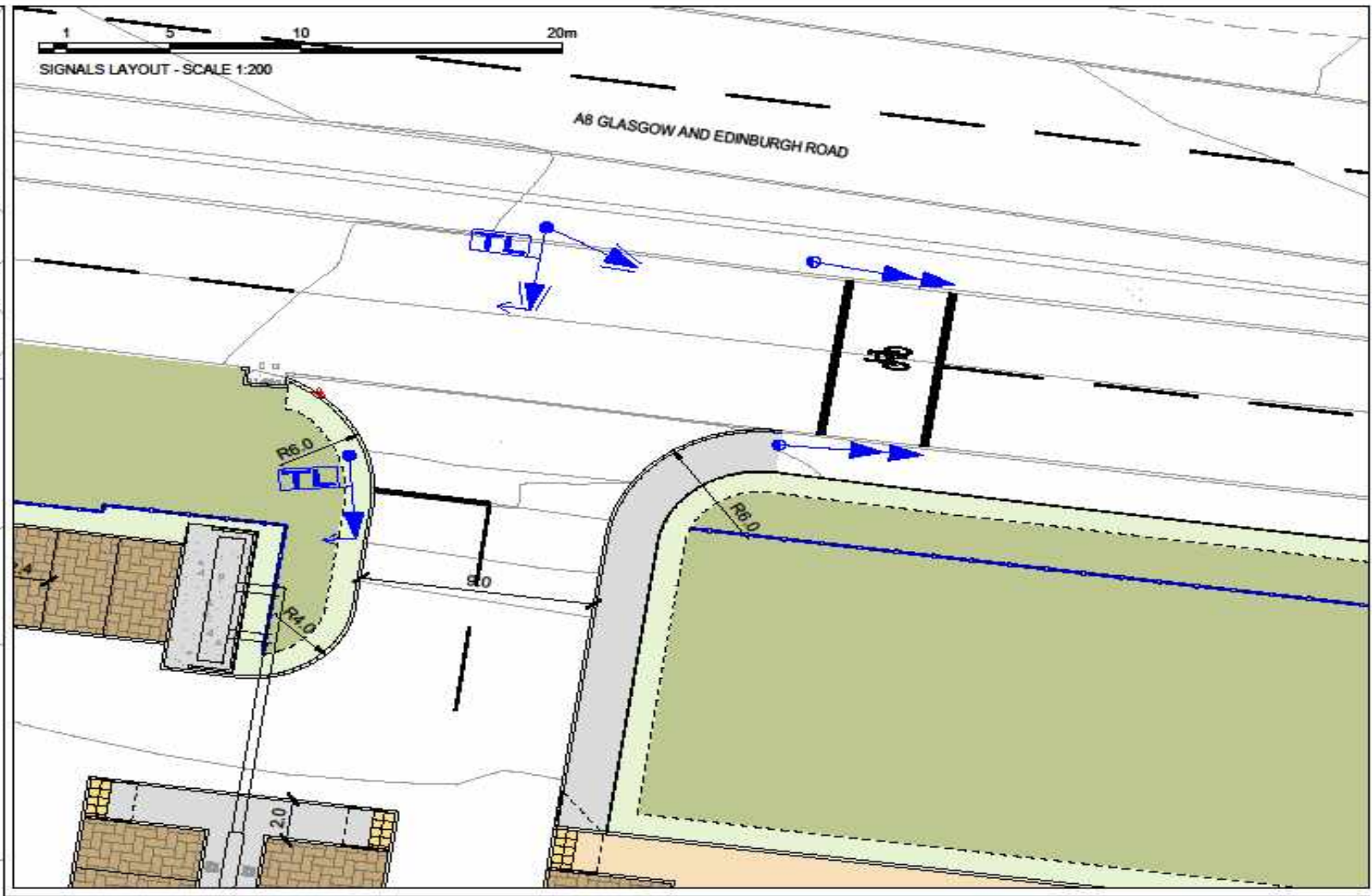
**North Elevation** – Edinburgh/Glasgow Road



PARK OVERVIEW

Edinburgh / Glasgow Rd

6	ALL RED DUMMY V	7	K	8	K M	9	P L	10	N P	11	K
12	ALL RED DUMMY W	13	Q	14	R						
15	ALL RED DUMMY X	16	S	17	T						



DRAWING N°  
3090001394-YU-00-XX-DR-Y-1001

REVISION  
P1

DO NOT SCALE

KEY:-

TRAFFIC SIGNAL ITEMS

Traffic Signal Pole

Swan Necked Pole

Tall Traffic Signal Pole

Stub Traffic Signal Pole

Primary Signal Head

High Level Primary Signal Head

Primary Signal Head with Right Turn Green Arrow

Primary Signal Head with Left Turn Green Arrow

Primary Signal Head with Ahead Green Arrow

Secondary Signal Head

Secondary Signal Head with Right Turn Green Arrow

Secondary Signal Head with Left Turn Green Arrow

Secondary Signal Head with Ahead Green Arrow

Turn Left Box Sign

Turn Right Box Sign

No Right Turn Box Sign

Ahead Only Box Sign

Combined Nearside Puffin Signal and Pedestrian Demand Unit

Combined Nearside Toucan Signal and Pedestrian Demand Unit

Pedestrian Demand Unit

Traffic Signal Controller Cabinet

Electricity Feeder Pillar

CIVIL ENGINEERING ITEMS

Red Tactile Paving

REV	DESCRIPTION	DRN	CHK	APP	DATE
<div><div>YUNEXTRAFFIC</div><div>DRAWING STATUS S2 - ISSUED FOR INFORMATION</div><div>CUSTOMER GLASGOW CITY COUNCIL</div><div>SCHEME TITLE DRAFT TRAFFIC SIGNAL DESIGN BAILLIESTON CROSS A8 GLASGOW AND EDINBURGH ROAD/ A89 MAIN STREET/ SWINTON AVENUE BAILLIESTON</div></div>					

Yunex Limited  
Bryans Lane  
Glasgow  
G4 7JF  
Tel: 01235 780000

SCALE AS SHOWN

PAPER SIZE: A1

DATE: 24/10/25

DRN: EH

CHK: SD

APP: SG

SHEET: 1 of 1

THIS DRAWING IS NOT PROVIDED AS A PLAN OF THE LOCATION OF ANY UNDERGROUND CONSTRUCTIONS OR UTILITY SERVICES, THE LOCATION OF SUCH CONSTRUCTIONS OR SERVICES SHOULD BE CONFIRMED BY THE USER OF THIS DRAWING PRIOR TO ANY EXCAVATION WORKS. YUNEX LIMITED DOES NOT GUARANTEE THE ACCURACY OF ANY INFORMATION PROVIDED BY ANY UTILITY ORGANISATION OR OTHER AUTHORITY AND ACCEPTS NO LIABILITY FOR ANY LOSS, DAMAGE OR INJURY RESULTING FROM EXCAVATIONS UNDERTAKEN BY OTHERS.

THIS IS AN UNPUBLISHED WORK, THE COPYRIGHT IN WHICH VESTS IN YUNEX LIMITED. ALL RIGHTS RESERVED. THIS DOCUMENT AND ITS INFORMATION IS SUPPLIED WITHOUT LIABILITY FOR ERRORS OR OMISSIONS AND NO PART MAY BE REPRODUCED, USED OR DISCLOSED EXCEPT AS AUTHORIZED BY CONTRACT OR OTHER WRITTEN PERMISSION. DOCUMENT CLASSIFICATION: UNRESTRICTED

# PARK OVERVIEW

## Civic Realm



# PARK OVERVIEW

## Civic Realm

Raised, white concrete planters with in-built seating and planting

Main Entrance

Civic Square: Larissa Granite, various sizes, laid to create a linear feel

Space for Catering Vendor

Outdoor Seating Area, Neso Granite Setts

Permeable Block Paving, Hydropave Fusion, Oat



Precedent Image



Raised, white concrete planters with in-built seating and planting



Outdoor Seating

# PARK OVERVIEW

## Civic Realm

Picnic Seating

Wheelchair carousel

Sway Alley Wobble Bridge

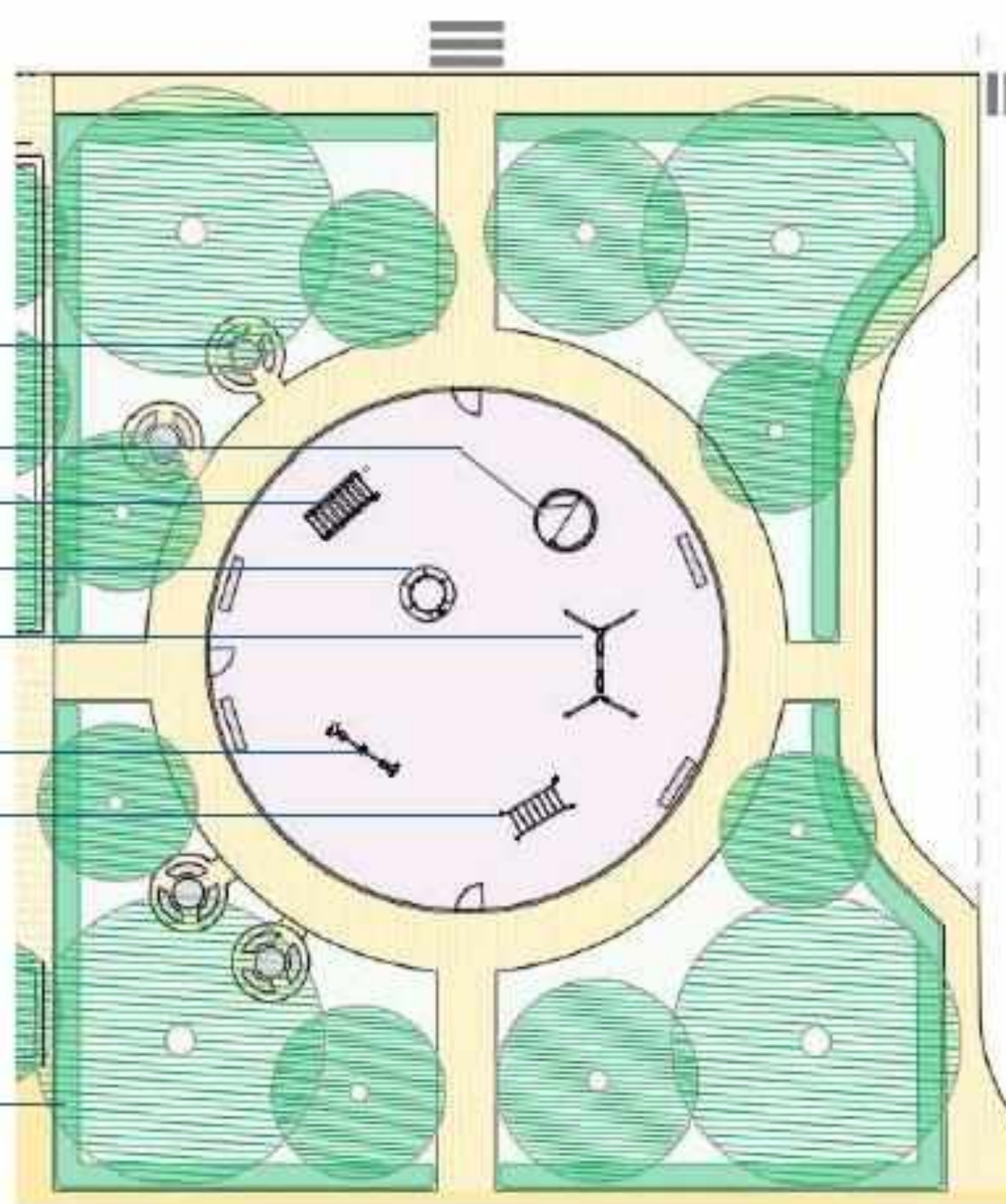
Trampoline

Swings

We Hopper

Overhead Ladder

Low hedging



Sway Alley Wobble Bridge



Swings



Wheelchair Carousel



Trampoline



Bowtop Fencing



Picnic Seating



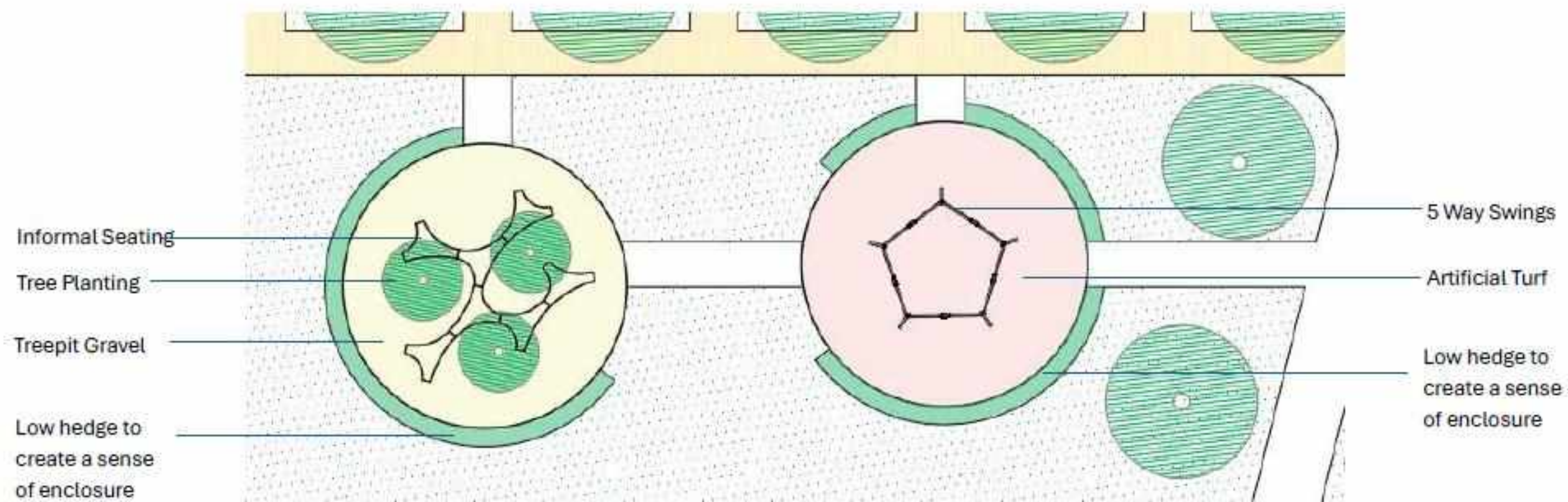
We Hopper



Overhead Ladder

# PARK OVERVIEW

## Civic Realm



Hedges to create a sense of enclosure



Treepit Gravel - Golden



Informal Seating



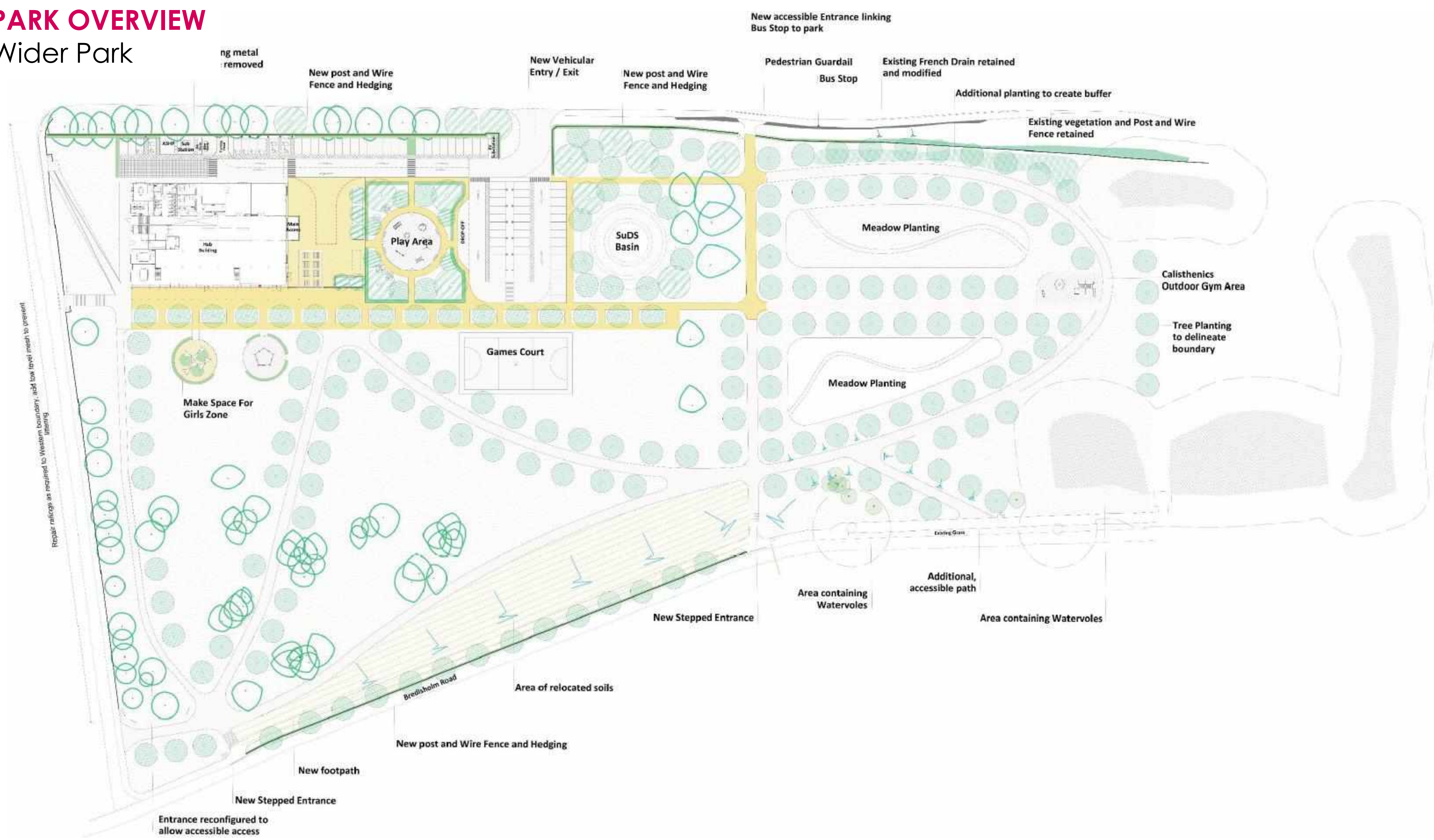
5 Way Swing



Tree Planting in Gravel

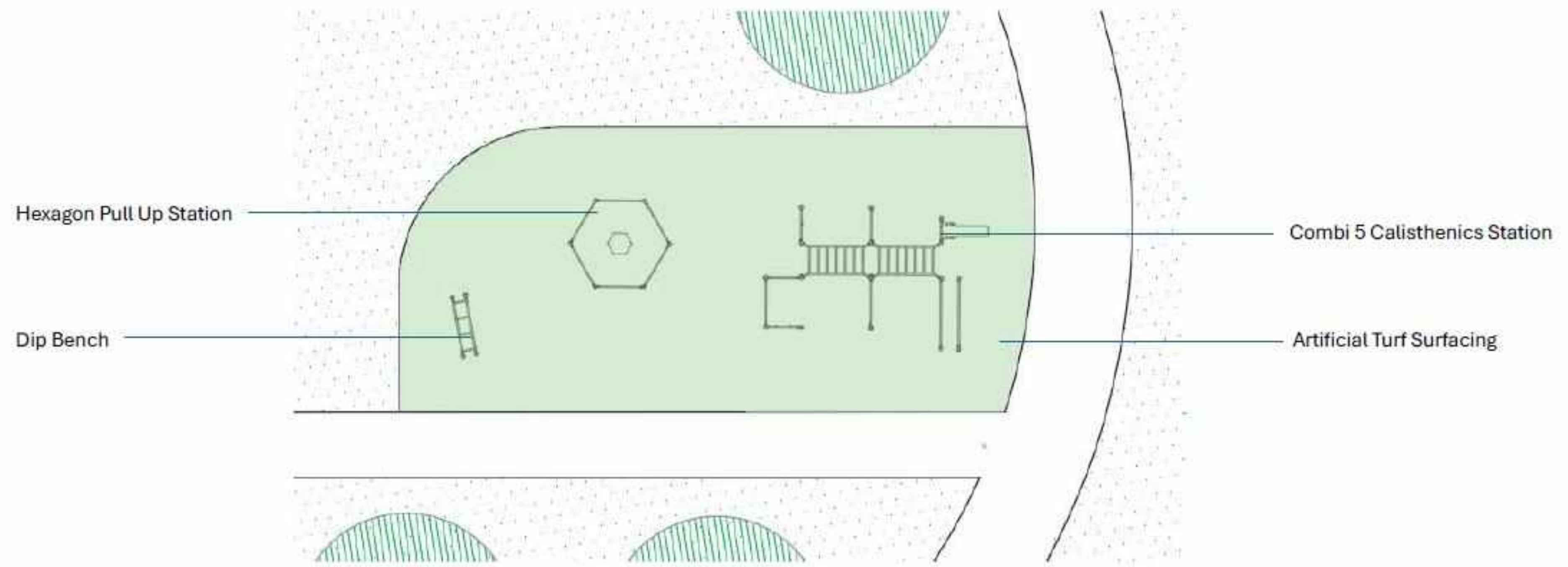
# PARK OVERVIEW

## Wider Park



# PARK OVERVIEW

## Wider Park



Dip Bench



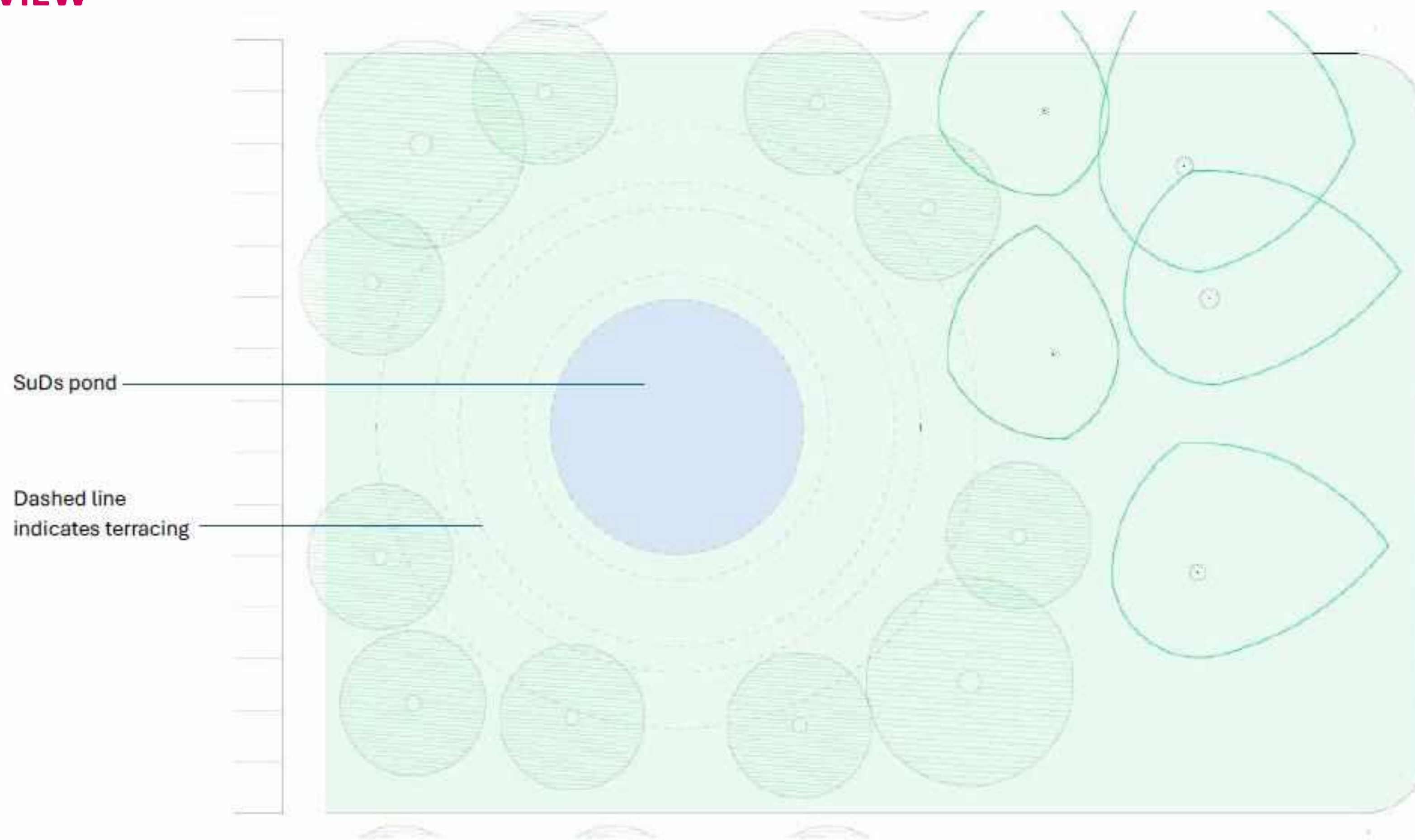
Combi 5 Calisthenics Station



Hexagon Pull Up Station

# PARK OVERVIEW

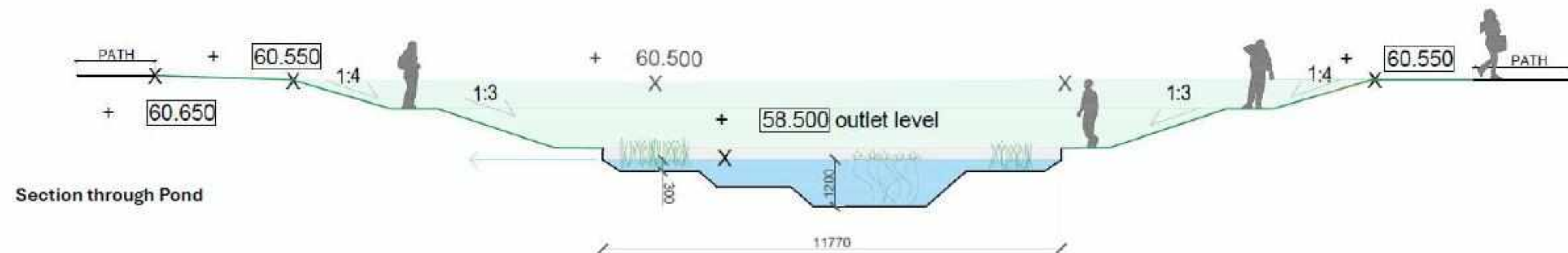
## Wider Park



Terracing to pond surround



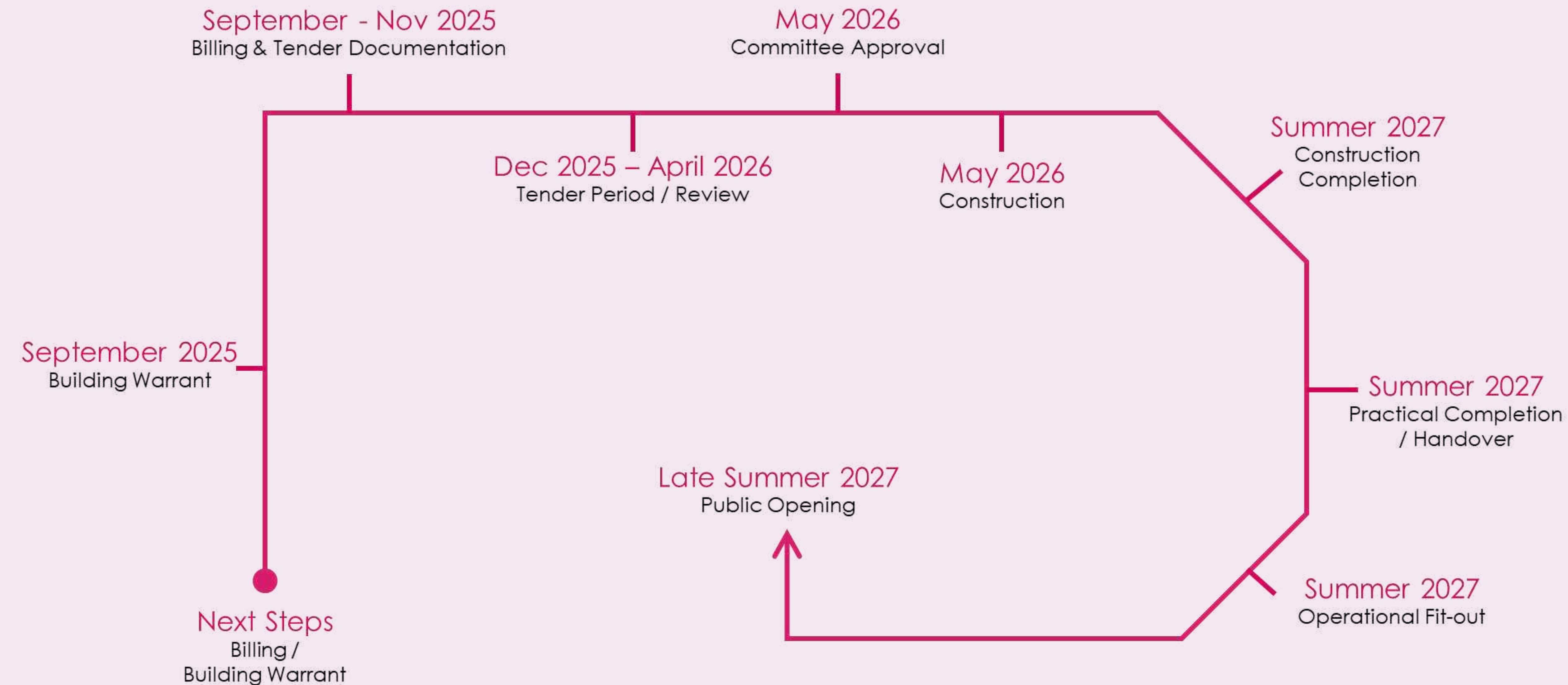
Planting to pond



Section through Pond

# LOOKAHEAD

## Projected Timeline & Milestones



# Questions