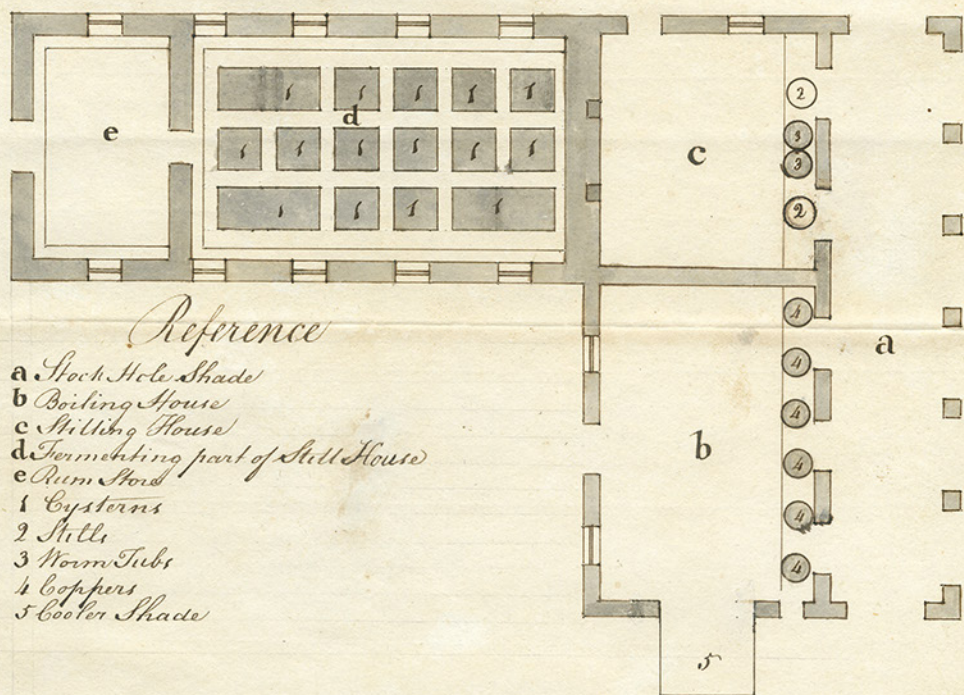
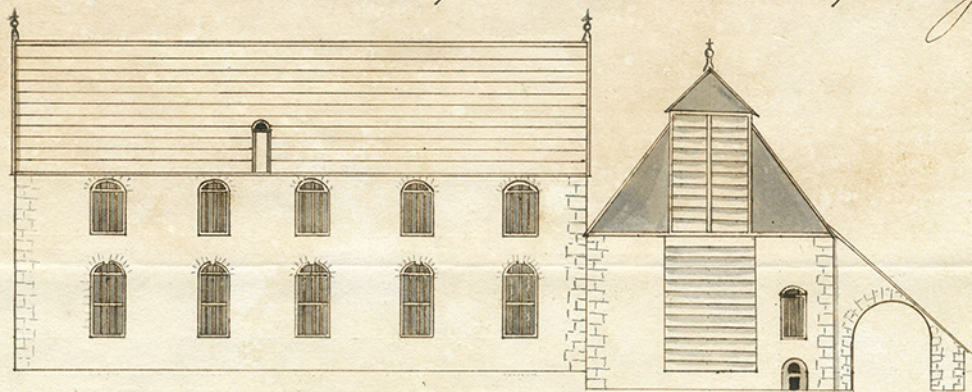


*A Plan and Elevation of Kier Works at Hampden in Jamaica*



*Reference*

- a Stock Hole Shade*
- b Boiling House*
- c Stilling House*
- d Fermenting part of Still House*
- e Rum Store*
- 1 Cysters*
- 2 Stills*
- 3 Worm Tubs*
- 4 Coppers*
- 5 Cooler Shade*



*A Scale of fifteen feet to an Inch*